



1m

— THE PULSE — THE TASTE — THE SOUL — THE RESERVATION —

# COMO

METROPOLITAN  
SINGAPORE

Opening September 1st, 2023

COMO Metropolitan Singapore – housed in COMO Orchard on Bideford Road – marks many firsts. As COMO Hotels and Resorts' home country debut, it offers an integrated and immersive experience spread over 19 floors, bringing the best of COMO Group's hospitality, fashion, wellness and cuisine into one inspiring location in the heart of Singapore.

It is the summation of a long-term vision of luxury from COMO Group's founder, Mrs Christina Ong: to provide access to curated collections from her multi-label fashion company Club 21, to bring new international dining concepts to Singapore for the first time, and to encourage meaningful, longer-stay wellness experiences at our new COMO Shambhala urban flagship on the building's fourth floor. For the most seamless access of all, there is our contemporary 156-room hotel, with city-wide views, and a rooftop pool.

By integrating technology into our offerings, guests can curate their stay with COMO to their needs, from the convenience of mobile check-ins to the ease of booking COMO experiences from their phone. Our location also ensures you are close to what you need: the upscale Paragon mall, world-class Mount Elizabeth Hospital, and a wealth of other shopping, dining, and medical services within a five-minute walk.

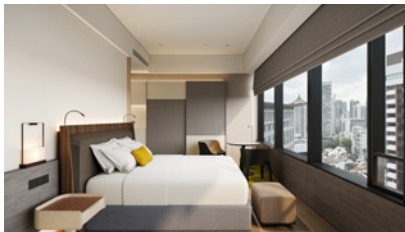
## ACCOMMODATION



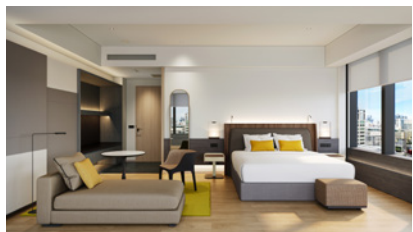
**Cairnhill Rooms** (28 – 36sq m) 51 units:  
Our Cairnhill rooms feel like private sanctuaries, with views of the city. Selected rooms feature roll-in bathrooms designed specifically for wheelchair access.



**Emerald Rooms** (36sq m) 93 units: These rooms provide peaceful respite from the bustling city, with the space to add an extra cot on request. Each tranquil room is elevated by customised furnishings to make your stay feel seamless.



**Metropolitan Suites** (57sq m) 9 units:  
Featuring a comfortable living and dining area, the Metropolitan Suite can comfortably sleep two adults. Wall-to-wall windows offer stunning views of Singapore.



**COMO Suites** (97sq m) 3 units:  
This two-bedroom suite feels like a home away from home: it includes a generous living and dining area, as well as cooking capabilities. It accommodates up to four adults, with both bedrooms offering en-suite bathrooms. Located at the top three floors of the hotel, each COMO Suite offers panoramic views of the city below.

## HOTEL SERVICES:

- Hotelwide Wi-Fi
- Mobile check-in and out with digital key
- Hotel app with live chat for assistance
- In-room TV with international channels
- In-room COMO Shambhala amenities
- In-room exercise kits (on request)
- In-room private bar, microwave, and pantry
- Room service
- Multilingual concierge services

## THE PULSE :

### FASHION

Discover it for yourself — two floors of seasonal fashion from multi-label boutique, Club 21. Personal shoppers can help you navigate the 8,000-sq ft space, with shopping delivered direct from the Club 21 floors to your hotel wardrobe. Designed by acclaimed award-winning Italian architect Paola Navone, the light-filled space and its 7m-high ceiling is home to a diverse line-up of brands that includes Alaïa, Amiri, Marine Serre, Simone Rocha, Thom Browne and Tom Wood. A digital wall installation by Norwegian artist Thomas Hilland imparts the space with a dynamic spirit and buzz.

## THE TASTE :

### DINING

For all-day dining, COMO Cuisine offers a spread inspired by authentic recipes from our worldwide properties featuring local favourites and classic dishes. A first for Asia, Cédric Grolet Singapore is the award-winning French pastry chef's fourth shop after Paris and London, offering a range of exquisite pastries, sandwiches and an exclusive tea menu. Marrying the conviviality of a refined Korean BBQ experience and the hallmarks of an American Steakhouse, COTE Singapore by restaurateur Simon Kim presents the highest quality prime beef cuts, a James Beard Foundation-nominated wine list, and a suite of classic-but-creative cocktails. For light bites and a relaxing atmosphere, head to our rooftop pool bar featuring sunset views of the city skyline.

## THE SOUL :

### WELLNESS

COMO Shambhala has been leading preventative health in the hospitality industry for over 25 years, with sixteen locations worldwide. This urban flagship of our global luxury wellness company occupies the literal and metaphorical 'heart' of COMO Orchard: a 800+ sq m haven dedicated to nurturing the brand's core mantra that 'Wellness Begins Within'. The personalised and expert-led approach addresses core movement – yoga, Pilates, Gyro, gym and functional fitness. We also look at gut health, nutrition, and body composition diagnostics, offer hot and cold immersion therapies, hyperbaric pods, and beauty treatments. Classes, workshops, one-day Wellness Packages and multi-day Wellness Paths allow you choose their wellness journey, or we curate one to suit your needs – including healthy food from COMO Shambhala Cuisine.

Please scan the QR code to download COMO Metropolitan  
Singapore images and renderings.



---

**COMO Metropolitan Singapore**  
30 Bideford Road, Singapore 229922  
E. [metsin@comohotels.com](mailto:metsin@comohotels.com) | T. +65 62333888

---

COMO HOTELS AND RESORTS  
[comohotels.com](http://comohotels.com)