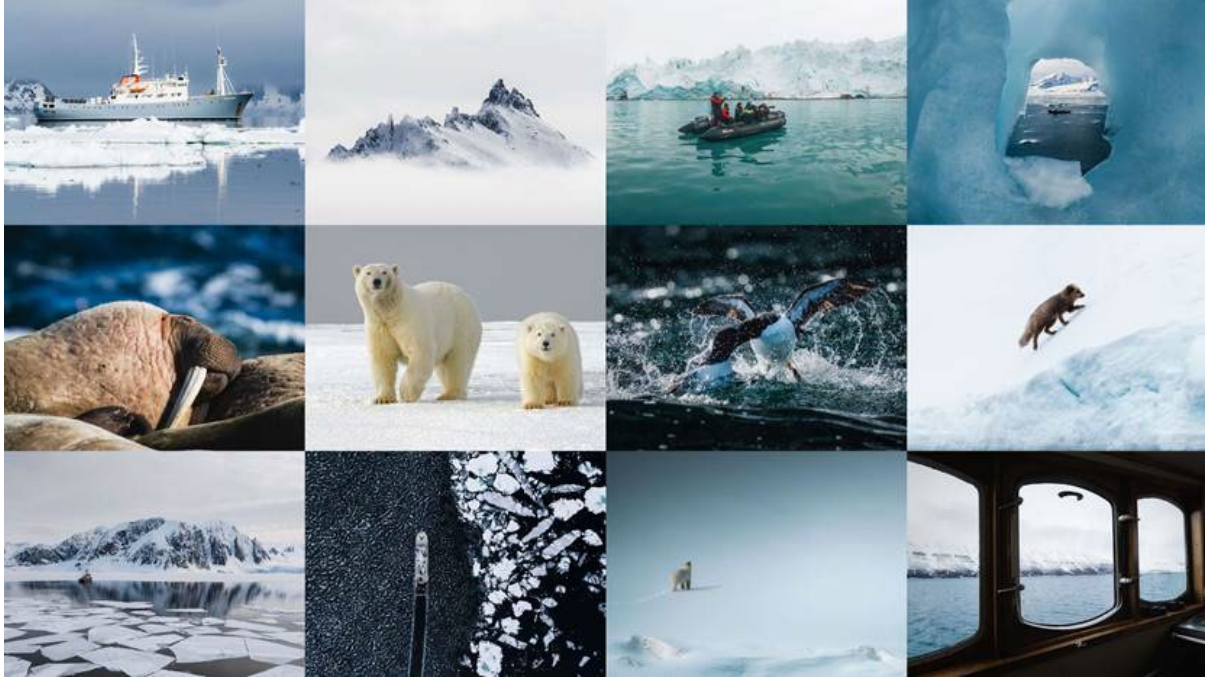


## COMO Hotels and Resorts Reimagines Arctic Exploration With an Exclusive Journey to Svalbard

*Two intimate COMO Journeys combine High Arctic discovery with the brand's signature wellness, cuisine and personalised service*



21st January – COMO Hotels and Resorts' dedication to thoughtful travel—defined by holistic wellbeing, inspired dining and intuitive service—takes a bold new direction with a rare Arctic collaboration. Partnering with specialist expedition operator Natural World Safaris, the award-winning hospitality group has created two micro-cruises to the Svalbard archipelago: immersive, small-group, expert-led expeditions that carry the brand's sensibility beyond its hotels and resorts and into one of the world's most remote regions.

Launching in May and September 2026, the 10- and 11-night itineraries offer rare access to the High Arctic, paired with the refinement and quiet elegance for which COMO is known. As the first Arctic expedition conceived by a luxury hospitality brand, the COMO Arctic Journey sets a new benchmark, seamlessly uniting polar exploration with elevated comfort and restorative wellbeing.

Crafted alongside Natural World Safaris, renowned for expertise in wildlife-rich and hard-to-reach destinations, the journey explores the raw beauty of Svalbard in an immersive way, allowing each experience to unfold naturally. Guests travel aboard the *M/S Polarfront*, a former Norwegian weather ship transformed into an intimate expedition vessel. With just seven suites accommodating a maximum of 12 guests, the experience is inherently personal, delivering rare access and exceptional attention to detail.

Each voyage evolves organically, guided by weather, wildlife and opportunity rather than a fixed schedule. Days are shaped by expert insights and hands-on exploration, from Zodiac excursions through glacial fjords to guided landings amid dramatic landscapes. Encounters with Arctic wildlife, towering peaks and remote

islands are complemented by onboard talks, photography sessions and informal discussions exploring polar ecology, sustainability and regional culture.

Wellness plays a central role, as Arctic exploration is paired with COMO Shambhala practices to create a journey that is both invigorating and restorative. Guests are invited to slow down and recalibrate through tailored treatments led by expert bodyworker Matteo Pasquali, as well as through quiet moments of contemplation set against the vastness and stillness of the polar environment.

Dining is a defining feature of the expedition, overseen by COMO's Vice President of Culinary, Daniel Moran. Every meal is created exclusively for the journey, with menus that balance comfort and nourishment while drawing on both Eastern and Western influences. Using locally sourced ingredients wherever possible, the culinary programme, paired with a carefully curated wine list, elevates expedition dining into an experience as memorable as the surrounding landscapes.

Together, COMO Hotels and Resorts and Natural World Safaris present an Arctic journey that reimagines exploration through a lens of elegance, wellbeing and authenticity—offering a new way to experience one of the planet's last great frontiers. The two distinct COMO Journeys offering contrasting perspectives of the polar north for 2026 include:

- **Expedition 1: 13–23 May 2026 – *The Arctic Awakens***

This early-season voyage reveals the Arctic at its most pristine, where vast sea ice shapes the landscape and wildlife begins to stir. Guests may witness polar bears roaming the floes, walrus resting on drifting ice, and seabird colonies filling the air with sound and motion. Bathed in the glow of the midnight sun, the expedition is ideal for those seeking the High Arctic in its rawest, most elemental form.

- **Expedition 2: 13–24 September 2026 – *The Arctic's Final Glow***

As autumn settles over the Arctic, this late-season journey reveals a softer, more vivid side of the polar north. Retreating sea ice opens new routes for exploration, whales surface more frequently, and the tundra glows with seasonal colour. Reindeer and Arctic foxes appear along the shoreline, while darkening skies bring the possibility of the Northern Lights—ideal for travellers seeking milder temperatures, longer shore landings and the chance to witness the Arctic's vibrant seasonal transition.

COMO Journey: Into the Arctic is now on sale. The 10-night May 2026 expedition starts from £21,500 (single occupancy) or £36,300 for two sharing a suite on an all-inclusive basis, including one night pre-expedition in Longyearbyen. Both expeditions are also available for private charter.

To book or for further information visit: <https://www.comohotels.com/como-journey-into-the-arctic>

ENDS

**Imagery – (password 1234)**

[CURATED - May Itinerary - Dropbox](#)

[CURATED - Sep Itinerary - Dropbox](#)

**For further press information:**

Louise James, Global Director of PR & Communications, COMO Hotels and Resorts

[louise.james@comohotels.com](mailto:louise.james@comohotels.com)

**About the COMO Group:**

The COMO Group, headquartered in Singapore, represents Christina Ong's unique vision of contemporary living. The Group encompasses the hospitality collection, COMO Hotels and Resorts, which offers personalised luxury travel experiences through individualised service, a commitment to holistic wellness, and award-winning cuisine. Each hotel is developed in response to the destination it inhabits. The Group also includes the international luxury fashion retailer Club 21, the award-winning wellness concept COMO Shambhala, and the philanthropic COMO Foundation. [www.comogroup.com](http://www.comogroup.com)