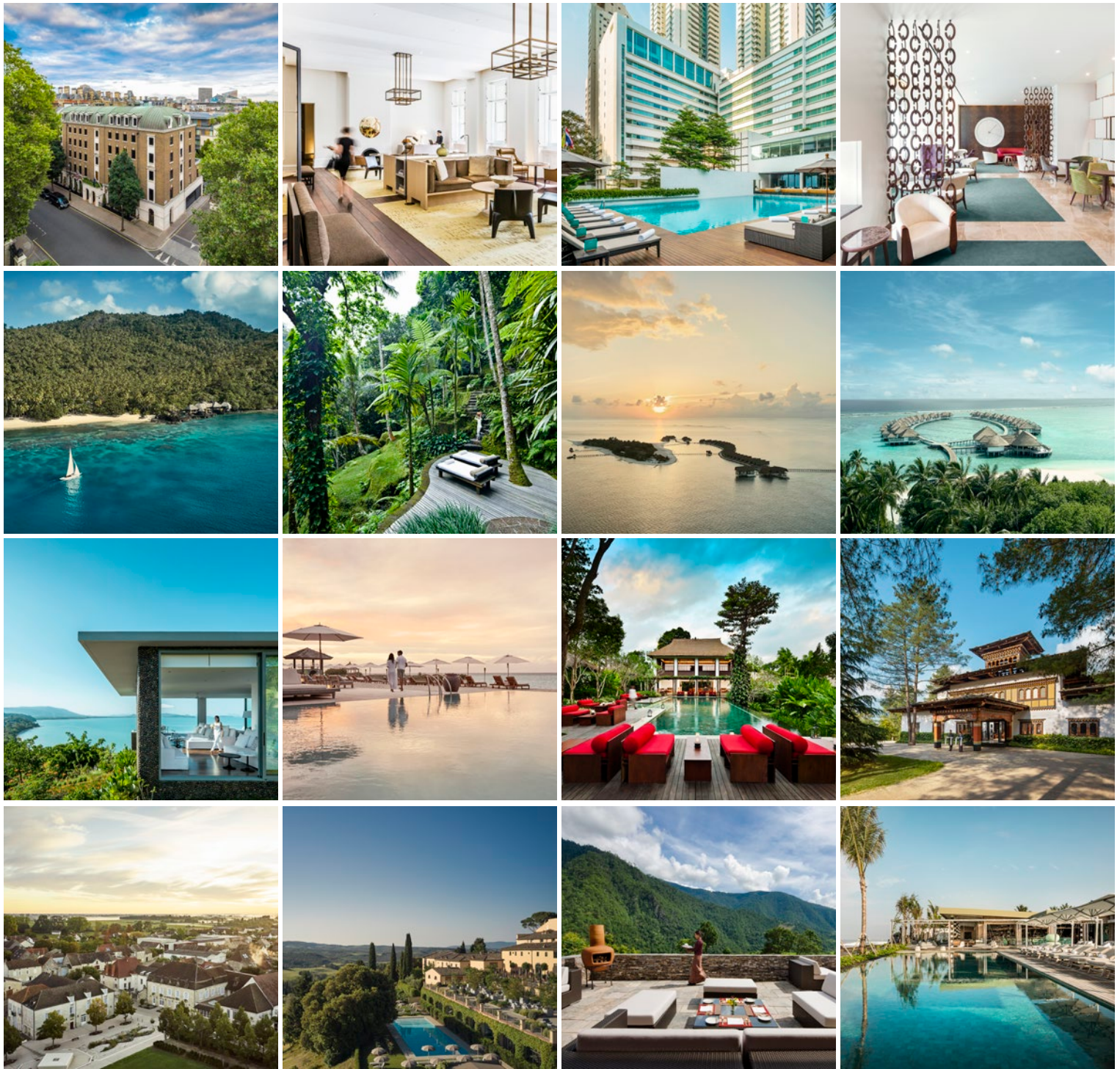




COMO
LAUCALA ISLAND

Fact Sheet





COMO Hotels and Resorts celebrates individual spirit. Our properties worldwide are entirely different from each other while sharing respect for exceptional cuisine, meaningful wellness, contemporary design, local culture, environment and service.

We strive to deliver experiences that are unique to you and the country you are visiting, from our city hotels in London, Perth and Bangkok, to island retreats in the Maldives, Turks and Caicos, Fiji and Thailand, from wild lodges in Bhutan's Himalayan valleys to resorts in Bali and Italy.

This distinctive COMO approach is what makes our special events stand apart, from high-profile weddings on one of our private islands, to corporate events or incentive trips. Whatever the scale, we obsess about the details, turning ambitious ideas into precious memories worth reliving.



Main pool overlooking main beach

COMO Laucala Island

Cakaudrove, Fiji Islands

T. +679 888 0077

E. laucalaisland@comohotels.com

W. comohotels.com/laucalaisland

Terrain: Volcanic, Rainforest, Mangrove, Beach

Location: COMO Laucala Island is a 12 square kilometre private island in a remote corner of Melanesia, accessed by a 50-minute private air charter from the country's Nadi International Airport.

COMO Laucala Island is a Fijian private island rich in the elegance of nature where space is luxury. Home to 25 residences spread across private beaches, above lagoons, atop hills and amidst jungle. Each tropical home is designed in harmony with Fiji's extraordinary natural heritage, while menus are thoughtfully conceived to celebrate the bounty of field and ocean.

The resort also features five restaurants that include healthy COMO Shambhala options, and the COMO Shambhala Retreat Spa located in the forested heart of the island, among the tropical flowers and fruit trees. Given our scale, the range of resort activities on offer often exceeds the length of a guest's stay.



Accommodation

Plantation Residences are located on their own stretches of white-sand beach, with spacious, open-plan living areas and spectacular sea views. The architecture combines soft curves and free-flowing shapes, with thatch roofs made from the leaves of sago palms and traditional coconut husk weave known as magimagi. All residences are set up with a lounge that opens up to a personal sundeck pool, outdoor garden shower, sunbeds, outdoor dining and private beach front.

6 One-bedroom Plantation Residences from 2,000sqm / Up to two guests

4 Two-bedroom Plantation Residences from 3,000sqm / Up to four guests

1 Three-bedroom Plantation Residence from 8,000sqm / Up to six guests



Accommodation

Seagrass Residences are nestled in beachfront lush vegetation, with wood and rock finishes that connect the interior spaces to the bay coastline they overlook. The unique architecture combines soft curves and free-flowing shapes, with thatch roofs made from the leaves of sago palms and traditional coconut husk weave known as magimagi.

All residences are set up with a lounge that opens up to a personal sundeck pool, outdoor garden shower, sunbeds, outdoor dining and a private beach front.

4 One-bedroom Seagrass Residences from 2,000sqm / Up to two guests

2 Two-bedroom Seagrass Residences from 3,000sqm / Up to four guests

1 Three-bedroom Seagrass Residence from 8,000sqm / Up to six guests



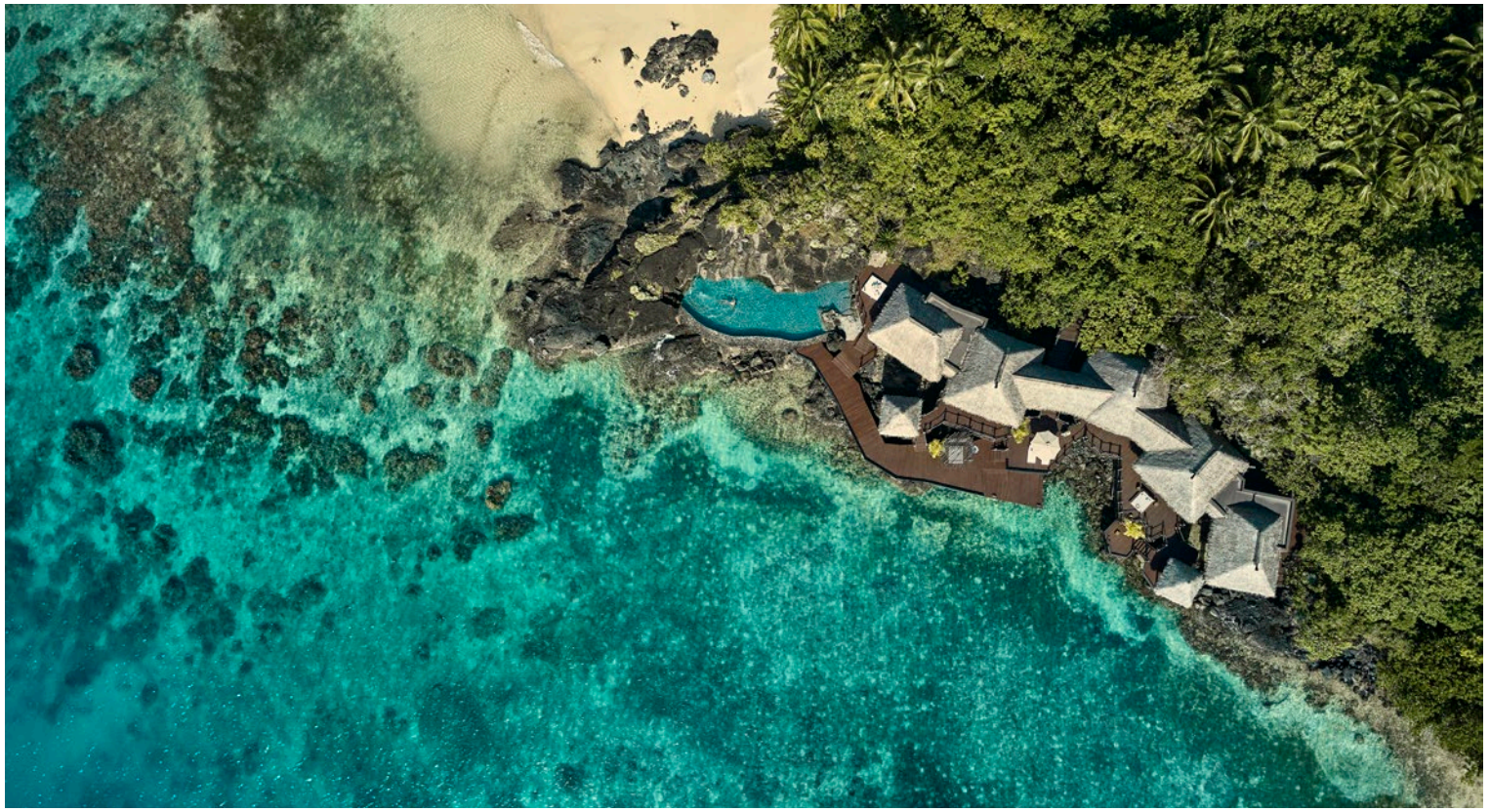
Accommodation

Plateau Residences sit on a hilltop ridge, the tropical architecture blurring the boundary between the homes and lush greenery. The unique architecture combines soft curves and free-flowing shapes, with thatch roofs made from the leaves of sago palms and traditional coconut husk weave known as magimagi.

All residences are set up with a lounge that opens up to a pool on a private sundeck with an outdoor garden shower, sunbeds and outdoor dining.

3 One-bedroom Plateau Residences from 1,500sqm / Up to two guests

1 Two-bedroom Plateau Residence from 2,000sqm / Up to four guests



Accommodation

SPECIALTY RESIDENCE

The Wai Residence: The ultimate sanctuary, this over water villa has its own jetty and wet edge rock pool. This split-level two-bedroom villa floats above an emerald lagoon with unobstructed ocean views and a private pool carved into rock. Special authentic architecture combines soft curves and free-flowing shapes, with thatch roofs made from the leaves of sago palms and traditional coconut husk weave known as magimagi.

1 Two-bedroom Wai Residence 2,000sqm / Up to four guests





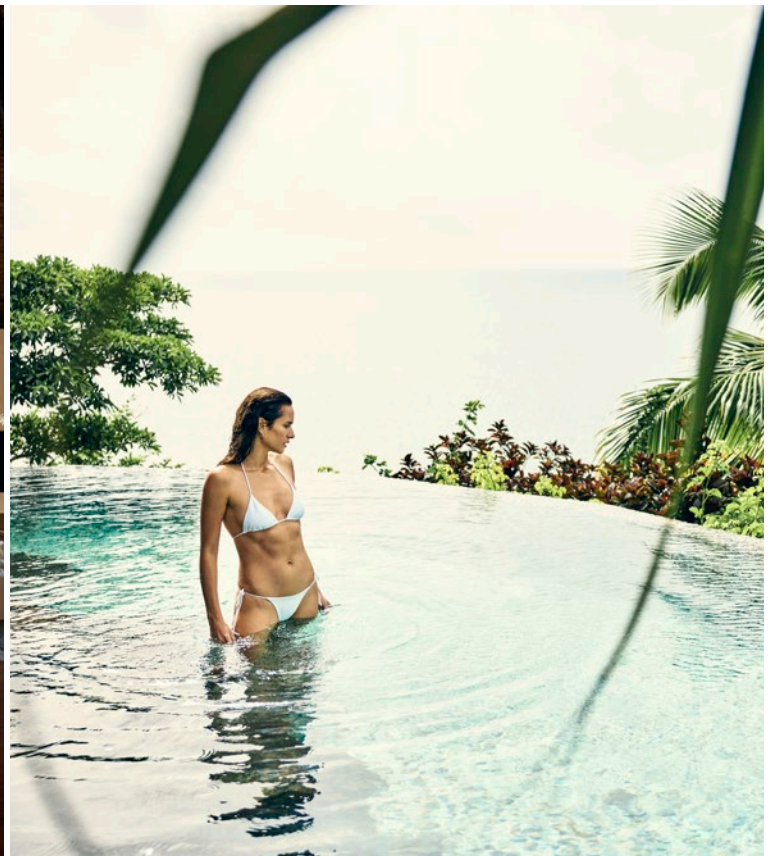
Accommodation

SPECIALTY RESIDENCE

The Udu Residence sits amidst the peninsula providing the ultimate privacy. You will be surrounded by green hills and turquoise ocean on its rocky perch with uninterrupted ocean views and a private beach set in a cove.

Special authentic architecture combines soft curves and free-flowing shapes, with thatch roofs made from the leaves of sago palms and traditional coconut husk weave known as magimagi.

1 Peninsula Residence at 800sqm with up to two guests





Accommodation

SPECIALTY RESIDENCE

Our **Delana Residence** offers a one-of-a-kind panoramic view of the private island. Sitting high atop the island, enjoy endless ocean views, a landscaped garden, two connected villas, a dining room, library and a lap pool.

The Delana Residence is the jewel of the resort's accommodation.

1 Hilltop Residence at 11,000sqm / Up to six guests)





Residence Features

- Private swimming pool with sundeck
- Daybeds and sun loungers
- Outdoor dining 'bures' (huts) and lounges
- Indoor and outdoor bathtubs
- A private golf buggy
- TVs (bedrooms and lounges) with free movies
- Bluetooth home entertainment system
- Residence refreshments including a fully stocked bar and light bites (replenished daily)
- Electronic safe
- High-speed Wi-Fi access
- Air-conditioning

Guest Services

- Private COMO lounge access at Nadi Airport
- Private 'Tau' (Fijian for 'friend') for every Residence
- 24-hour concierge services
- In-Residence Dining from 6am to 10pm
- Laundry, pressing and housekeeping services
- Resort-wide Wi-Fi access
- Babysitting services
- 24-hour medical services (clinic and doctor)



Resort Facilities

- Fitness Centre with extensive equipment
(Personal training services upon request)
- Leisure Centre
- Chapel
- Kids Club





Plantation House



Seagrass Lounge and Restaurant

Dining

Not just flavour, but health, wellbeing and self-sustainability are core values to the COMO Laucala Island dining experience. Menus include COMO Shambhala options, which are high in taste and nutrition while remaining low in fats and refined sugars. We grow fruits and vegetables, breed poultry and cattle, and bottle our own honey and volcanic mineral water. This produce then goes into all our restaurant and bar menus, from farm to table. Every stay includes all dining and beverages (aside from special vintages from the resort's first-class wine cellar).

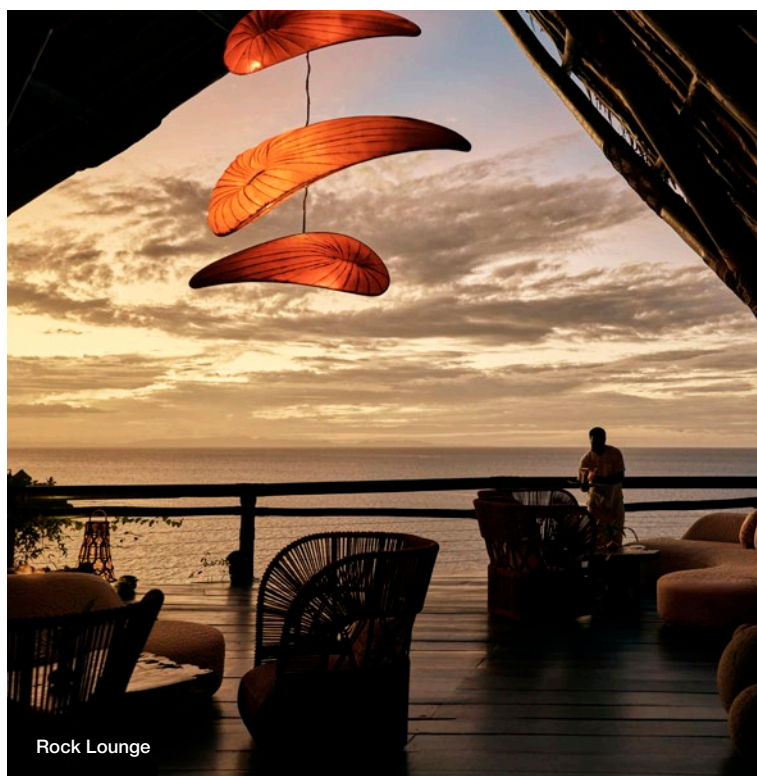
Plantation House – A restaurant located in a classic plantation home offering fine dining and specialty wines, including older vintages and 'New World' options.

Seagrass Lounge and Restaurant – A treetop dining area with Pan-Asian culinary influences, panoramic views and a lively atmosphere – accessible by land and sea.

Rock Lounge – A laid-back bar overlooking Seagrass Bay with spectacular sunset views and exceptional cocktails.

Pool Bar – A relaxed poolside hang-out that serves tropical drinks and light bites.

Beach Bar – A spot on the shore to enjoy fragrant barbecues of freshly caught fish.



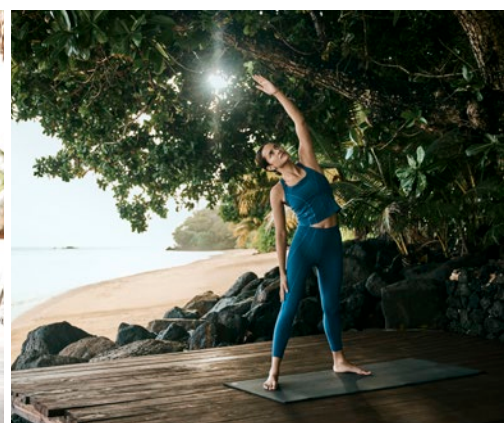
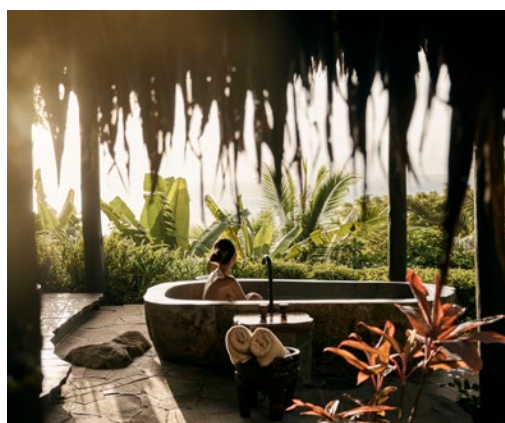
Rock Lounge



Pool Bar



COMO Shambhala Retreat Treatment Room



Wellness

Our island COMO Shambhala Retreat is a celebration of the many fresh, nourishing resources that can be found in Fiji. Treatments make use of the island's herbs, stones, flowers, fruits and soils, with the spa located on a forested hilltop location among the birds.

- There are four couples' treatment villas, each with a private treatment room, hot stone relaxation room, outdoor bathtub and a private changing room
- Two wet treatment rooms with Vichy showers and steam facilities
- A beauty salon, including manicure and pedicure rooms



Special Activities

Indulge in a private 18-hole, par -72 championship golf course, designed by Scotsman David McLay Kidd.





Activities

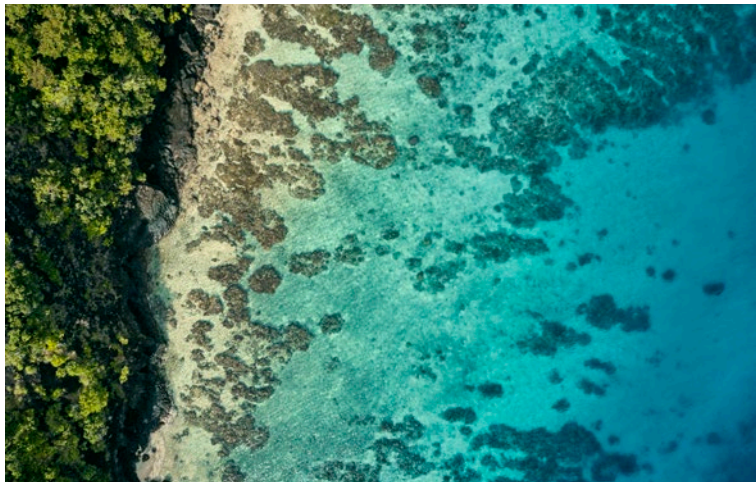
A range of fun water activities such as world-class sailing, game fishing and surf await.

- Dive and snorkel through thriving inner reef marine life
- Game fishing from the resort's yacht
- Watersports: kite-surfing, jet skiing, wakeboarding, underwater scootering, kayaking, paddleboarding, surfing and more
- Catamaran and charter sailing:
 - Hobie cat
 - Laser
 - Amanda: A Dragon class sailing boat that qualified in the 1948 Olympics
 - Rere Ahi: An elegant teak-finished boat from 1970; its name means 'Flying Fire' in Maori
 - Riviera: A Riviera 41 Flybridge yacht with two cabins, designed by naval architect Frank Mulder

Experience our paradise with amazing views and the joy of nature with activities that you can rarely find in a single island location:

- Nature walks and scenic hikes
- Horseback riding along the beach, through plantations and coconut groves
- Mountain biking
- Tennis





Sustainability and Community Investment

At COMO Hotels and Resorts, we act as custodians, rather than managers, of each destination. We recognise the privilege and responsibilities of being part of the community and are committed to celebrating local culture, supporting the domestic economy and minimising our impact on the environment.



Island Airport

COMO Laucala Island has a privately operated, grooved, apron concrete airstrip with runway and taxiway lighting, illuminated windsocks adjacent to the runway threshold and Precision Approach Position Indication (PAPI) lights.

International arrivals may land at Laucala Airport at additional cost. The cost covers customs, immigration and quarantine clearance to be arranged in direct liaison with the COMO Laucala Island reservations team.

Aircraft ground services

- Aircraft parking
- Aircraft towing
- Passenger and baggage handling
- Maintenance and engineering support
- Aircraft cabin cleaning and exterior washing service

Emergency Services

- 24-hour security
- Professional fire-fighters
- Medical team

Hangars

Laucala Airport has four small hangars. Hangar One can be utilised as a nose dock for mid-size business jets. Smaller jets and Turboprops can be partially enclosed inside all hangars.

Catering

Our chefs can cater for all departing guests according to preference or dietary requirements.

Biosecurity

Laucala Island is an official biosecurity area and former quarantine station.



CITY HOTELS

COMO METROPOLITAN BANGKOK

27 South Sathorn Road,
Tungmahamek, Sathorn,
Bangkok 10120, Thailand
T. +66 2 625 3333
E. res.met.bkk@comohotels.com
W. comohotels.com/
metropolitanbangkok

COMO METROPOLITAN LONDON

Old Park Lane, London W1K 1LB, UK
T. +44 20 7447 1000
E. met.lon@comohotels.com
W. comohotels.com/
metropolitanlondon

COMO THE HALKIN, LONDON

Halkin Street, London SW1X 7DJ, UK
T. +44 20 7333 1000
E. thehalkin@comohotels.com
W. comohotels.com/thehalkin

COMO THE TREASURY, PERTH AU

1 Cathedral Avenue, Perth,
WA 6000, Australia
T. +61 8 6168 7888
E. como.thetreasury@comohotels.com
W. comohotels.com/en/thetreasury

RESORTS

COMO CASTELLO DEL NERO, TUSCANY

Strada Spicciano, 7, 50028, Barberino
Tavarnelle, Tuscany, Italy
E. castellodelnero@comohotels.com
T. +39 055 806470
W. comohotels.com/castellodelnero

COMO COCOA ISLAND, MALDIVES

Makunufushi, South Malé Atoll,
Maldives
T. +960 664 1818
E. cocoaaisland@comohotels.com
W. comohotels.com/cocoaaisland

COMO LAUCALA ISLAND

Cakaudrove, Vanua Levu, Fiji Islands
T. +679 888 0077
E. laucalaisland@comohotels.com
W. comohotels.com/laucalaisland

COMO LE MONTRACHET

10 place du Pasquier de la Fontaine
21190 Puligny-Montrachet France
T. +33 03 80 21 30 06
E. lemontrachet@comohotels.com

COMO MAALIFUSHI, MALDIVES

Thaa Atoll, Maldives
T. +960 678 0008
E. maalifushi@comohotels.com
W. comohotels.com/maalifushi

COMO PARROT CAY, TURKS AND CAICOS ISLANDS

164 Leeward Marina, Providenciales
Turks and Caicos Islands TKCA 1ZZ
British West Indies
T. +1 649 339 7788
US Toll-free: +1 855 727 7682
E. parrotcay@comohotels.com
W. comohotels.com/en/parrotcay

COMO POINT YAMU, PHUKET

225 Moo 7, Pa Klok, Talang,
Phuket 83110, Thailand
T. +66 76 360 100
E. res.pointyamu@comohotels.com
W. comohotels.com/en/pointyamu

COMO UMA CANGGU, BALI

Jalan Pantai Batu Mejan,
Echo Beach, Canggu,
Badung 80361, Bali, Indonesia
T. +62 361 620 2228
E. como.uma.canggu@comohotels.com
W. comohotels.com/en/umacanggu

COMO UMA PARO and COMO UMA PUNAKHA

PO Box 222, Paro, Bhutan
T. +975 8 271 597
E. res.uma.bhutan@comohotels.com
W. comohotels.com/en/bhutan

COMO UMA UBUD, BALI

Jalan Raya Sanggingan Banjar
Lungsiakan, Kedewatan, Ubud,
Gianyar 80571, Bali, Indonesia
T. +62 361 972 448
E. uma.ubud@comohotels.com
W. comohotels.com/umaubud



COMO
SHAMBHALA

COMO SHAMBHALA ESTATE

Banjar Begawan, Desa Melinggih
Kelod Payangan, Gianyar 80571,
Bali, Indonesia
T. +62 361 978 888
E. CSestate@comohotels.com
W. comohotels.com/
comoshambhalaestate